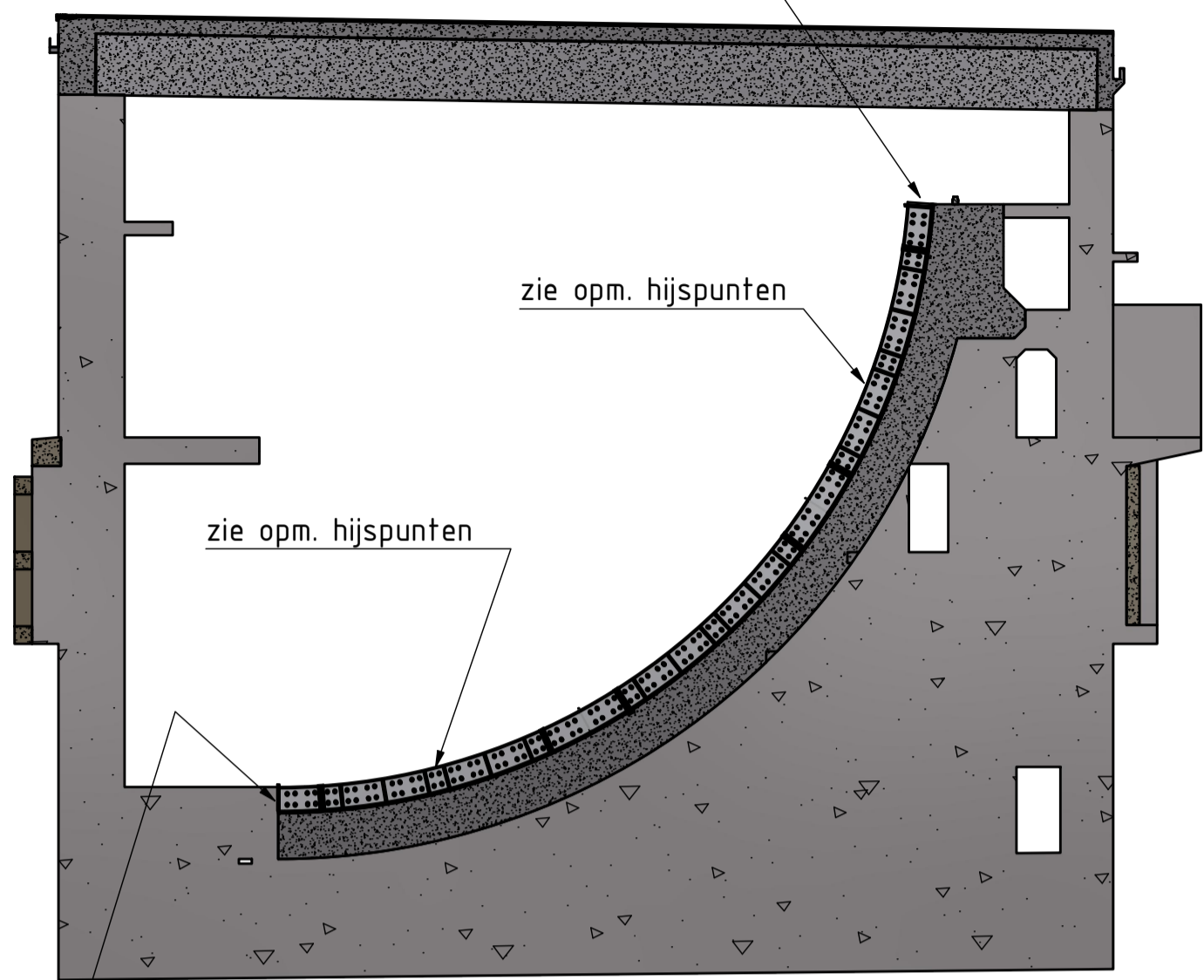


Hijspunten
d.m.v. 2x4 M... tapgaten in zijkant pl. -120-
juiste positie later te bepalen

Drukpunt om het geheel op te duwen
en juist af te stellen.
d.m.v. 2x2 M... tapgaten in kopse kant pl. -80-
(nader te bepalen)



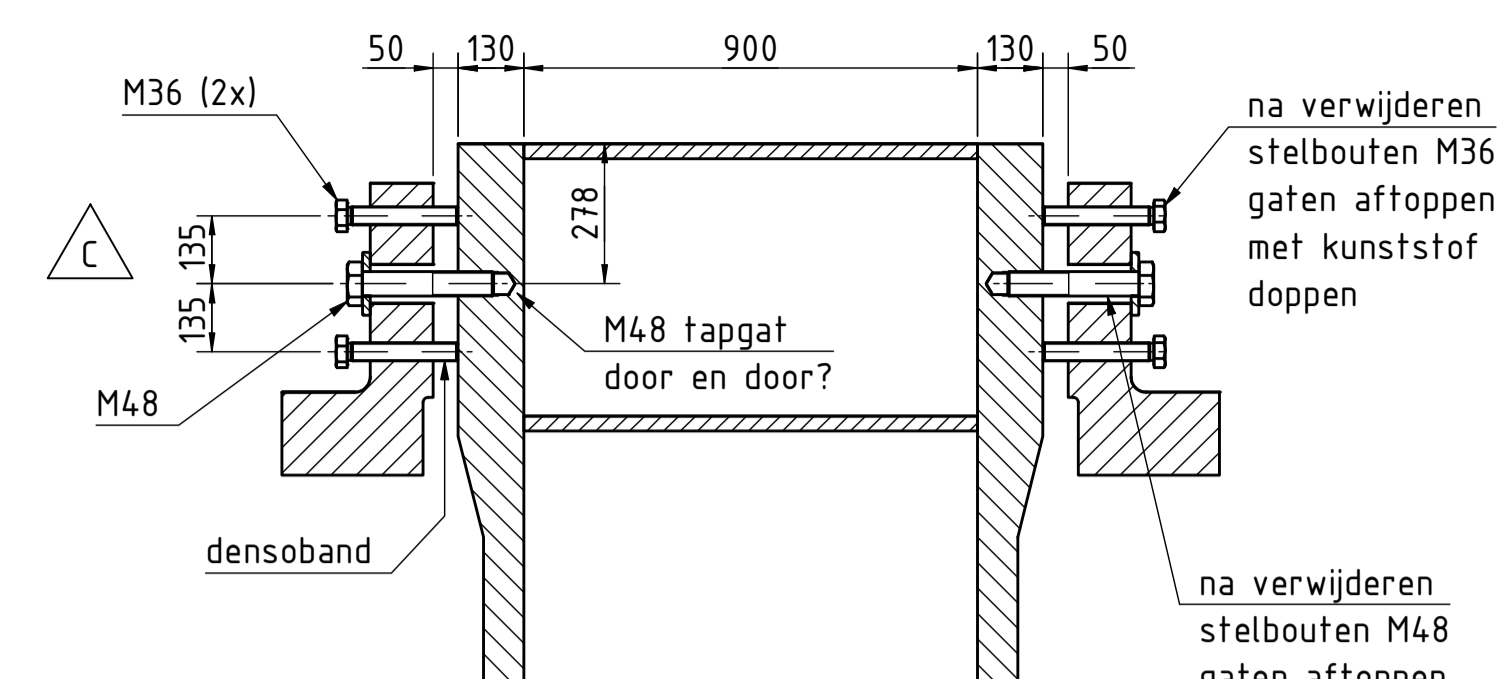
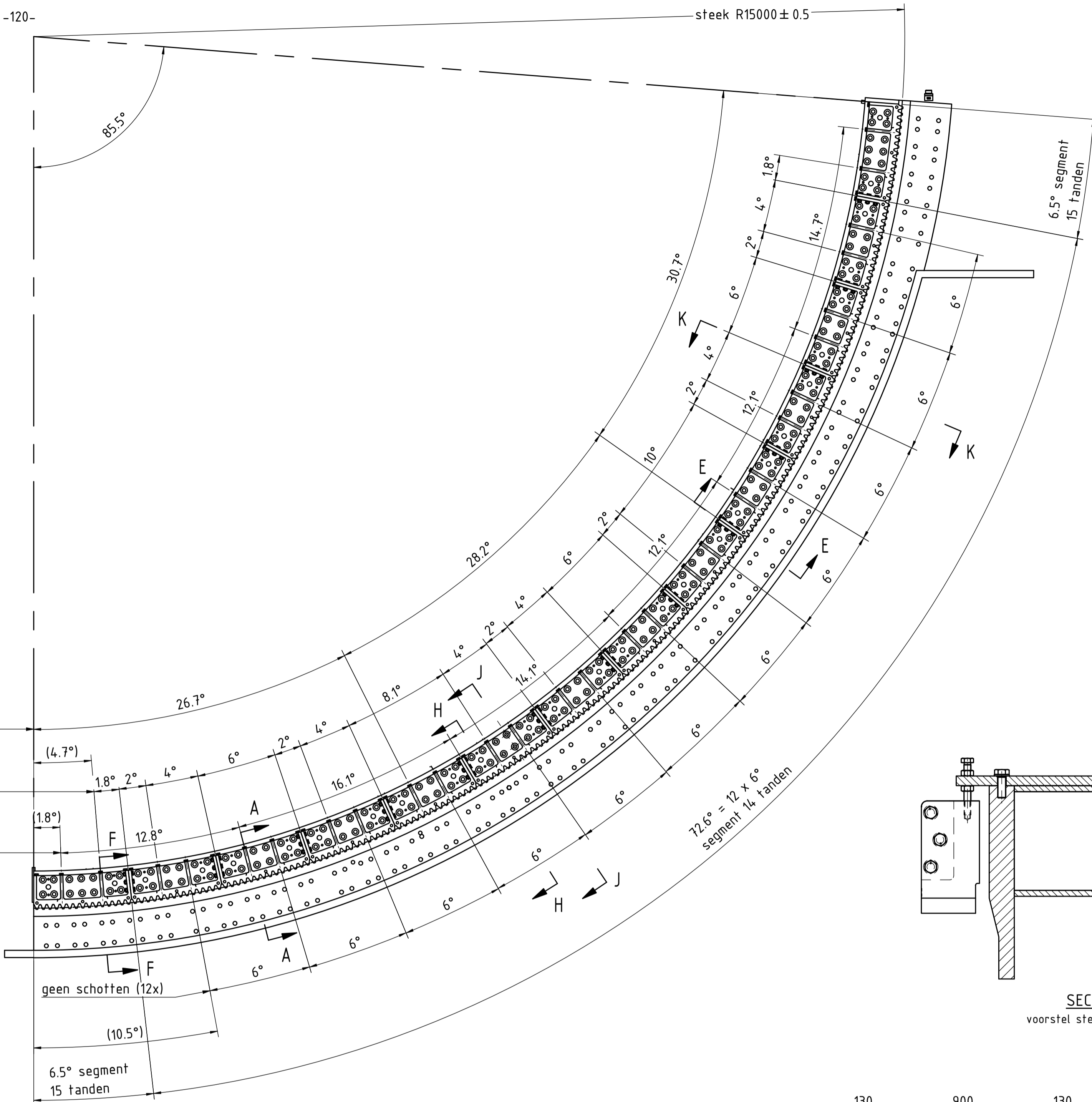
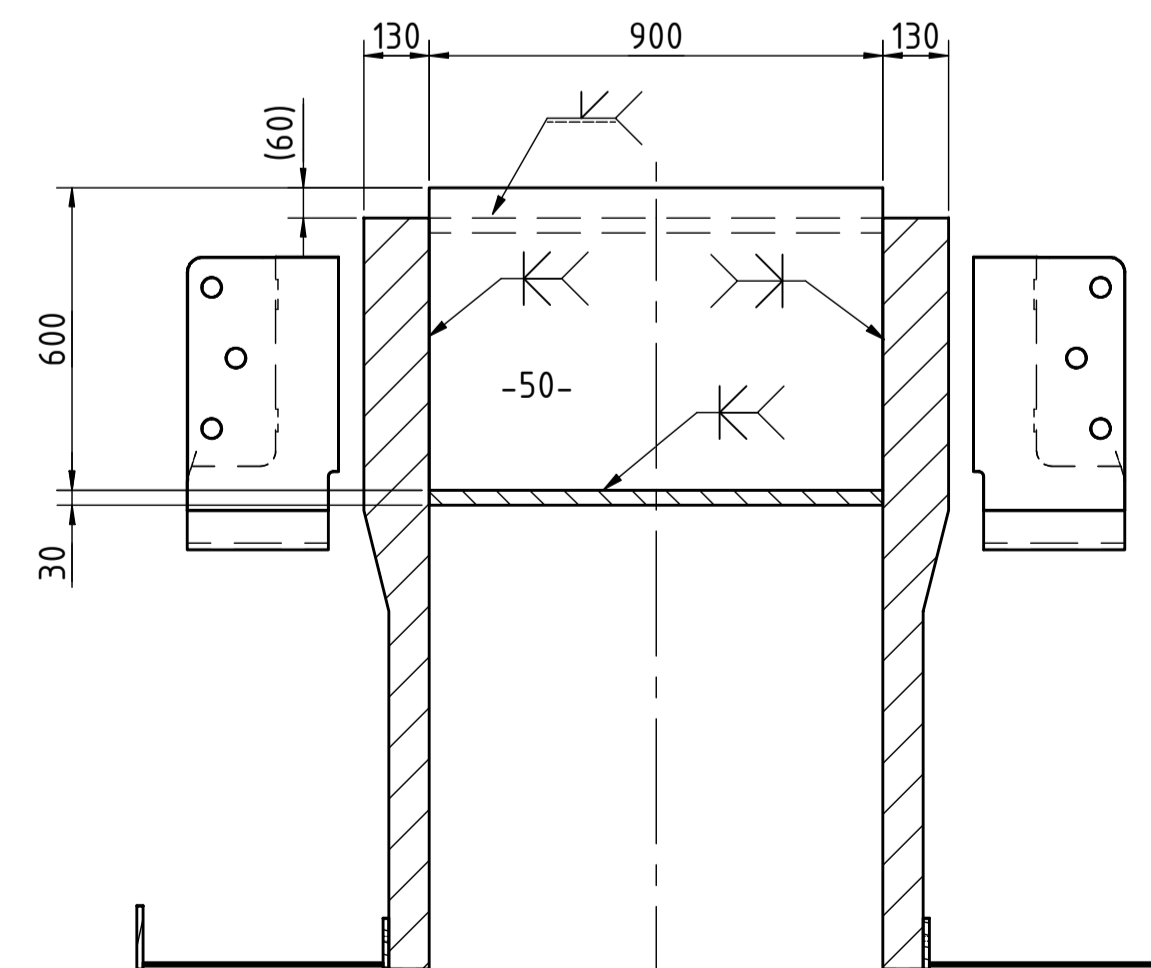
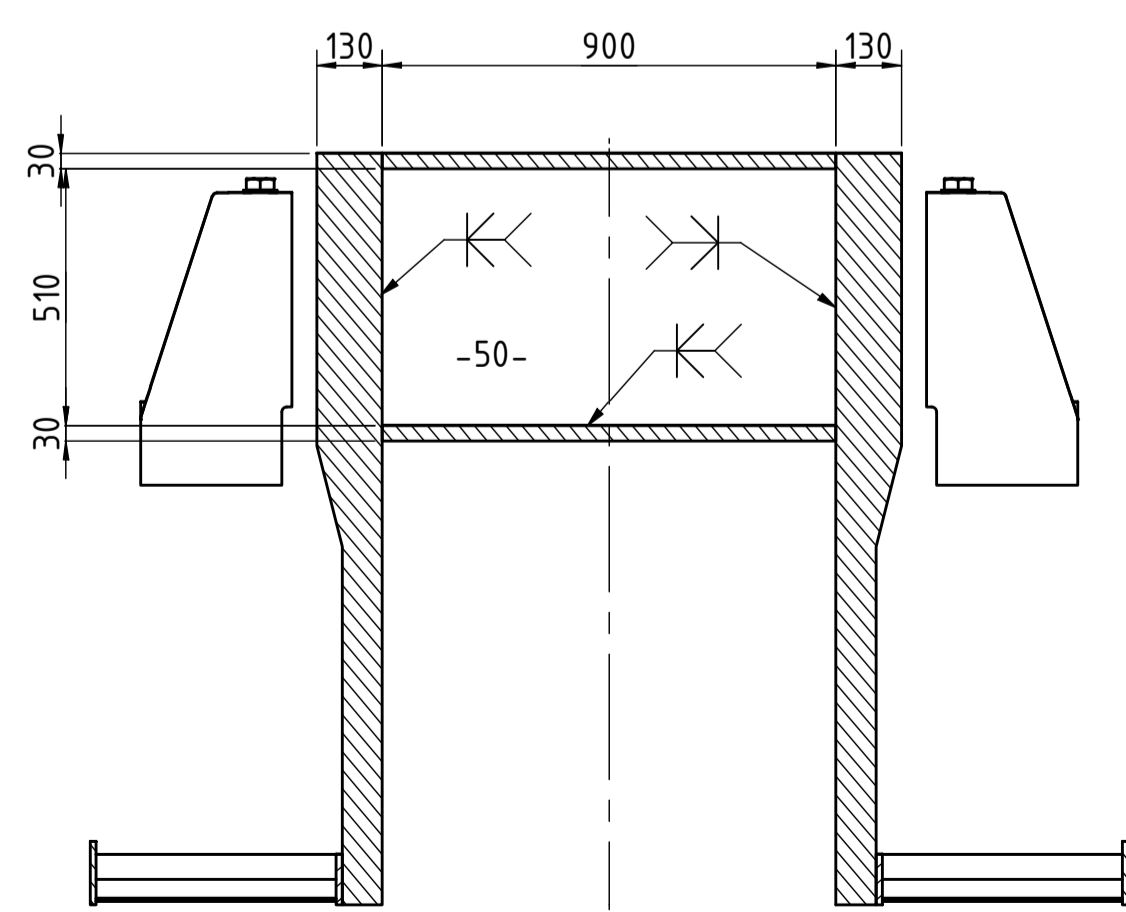
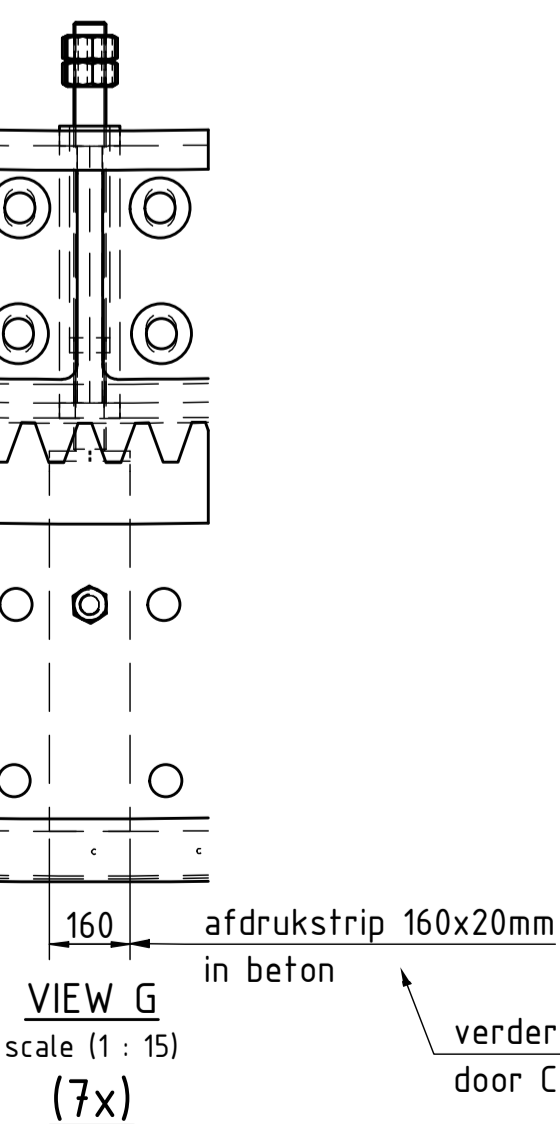
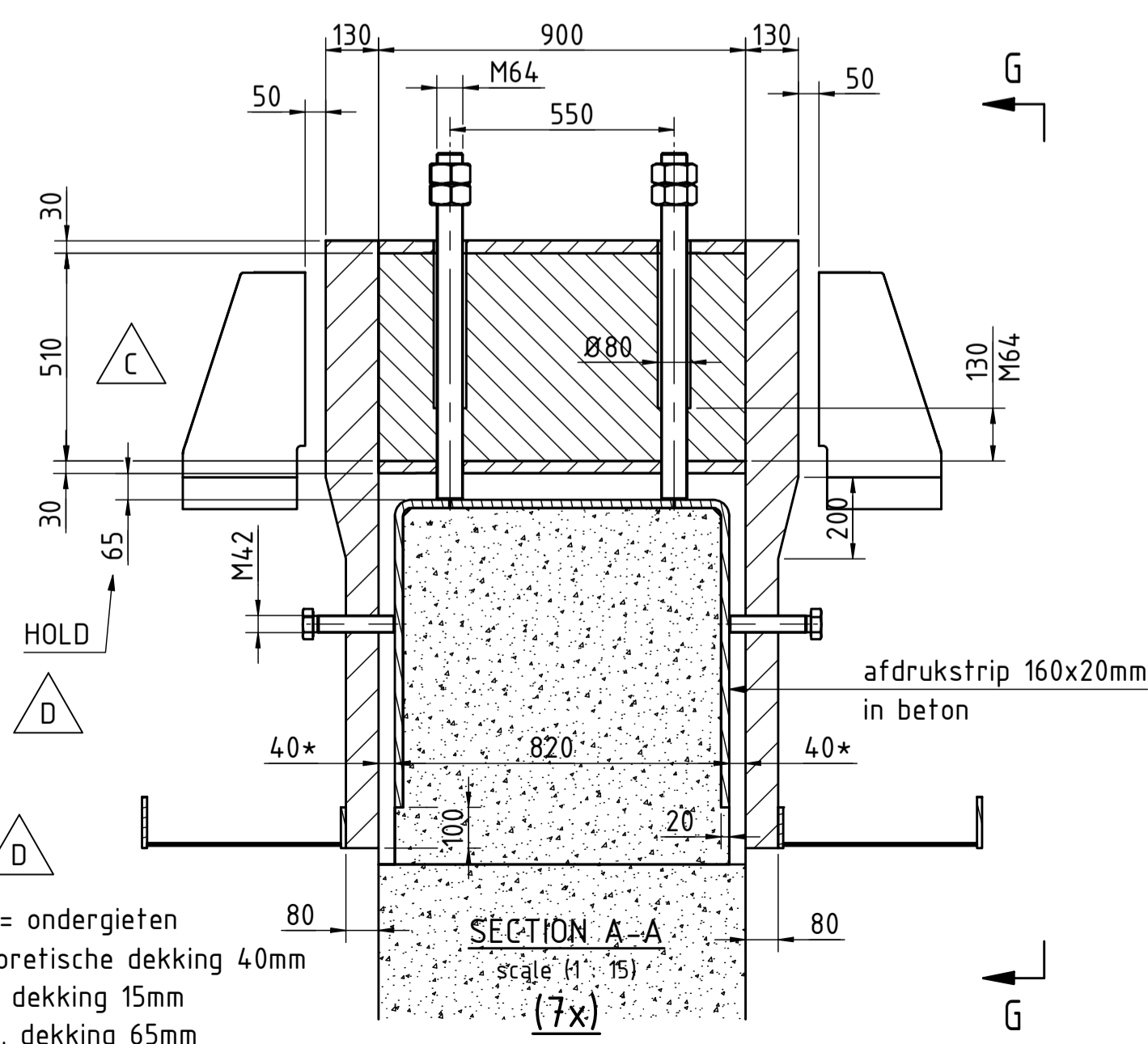
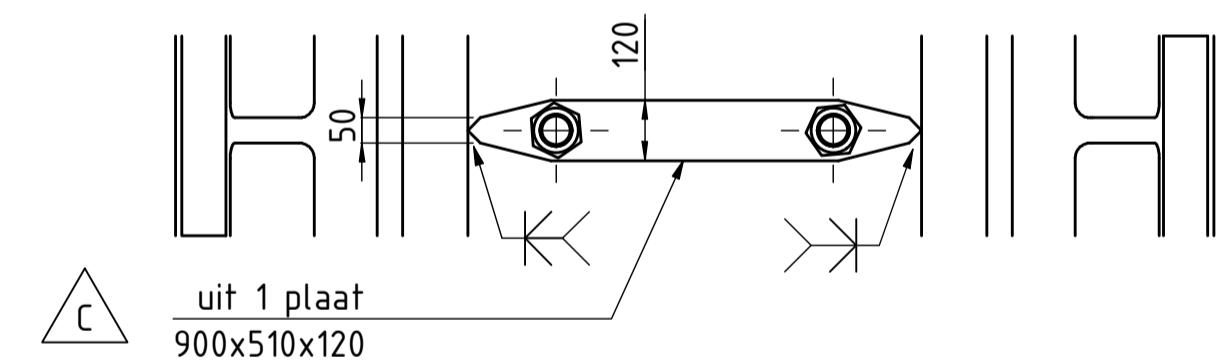
SECTION G-G
scale (1 : 150)

Vijzel constructie om tandbaan
tegen te houden en juist af te stellen.
geen aanpassingen aan tandbaanconstructie

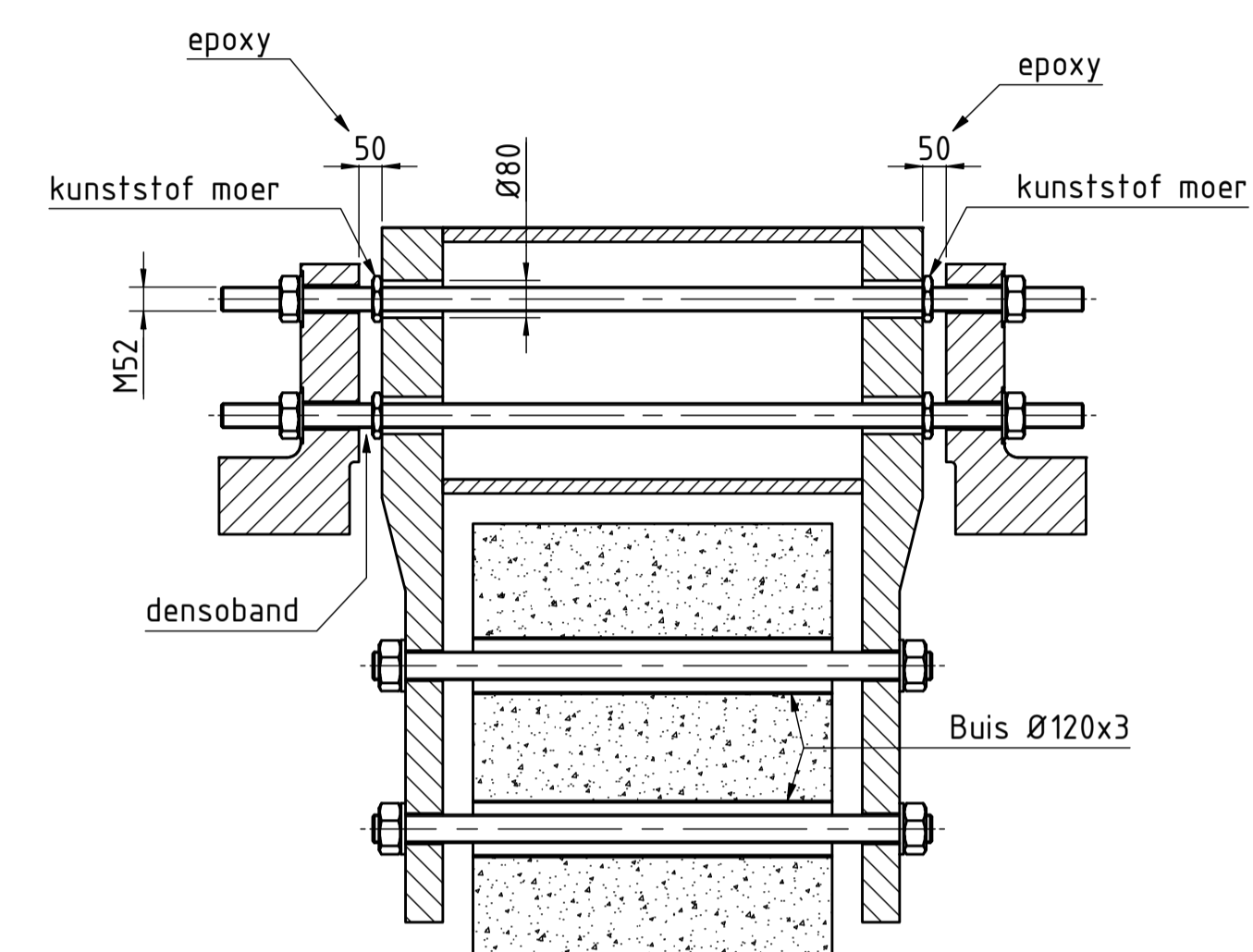
zie section E-E doorlopend schot en kopschot 50 mm tussen bovensluitplaten (4x)
zie section E-E
bestaand ontwerp

zie section F-F schotten dik 50 mm (20x)
zie section F-F
bestaand ontwerp

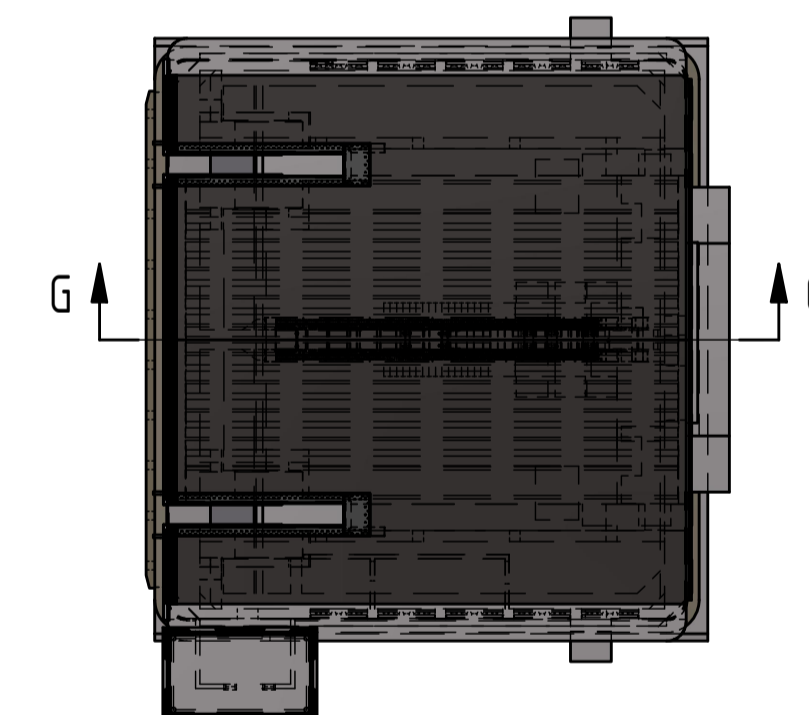
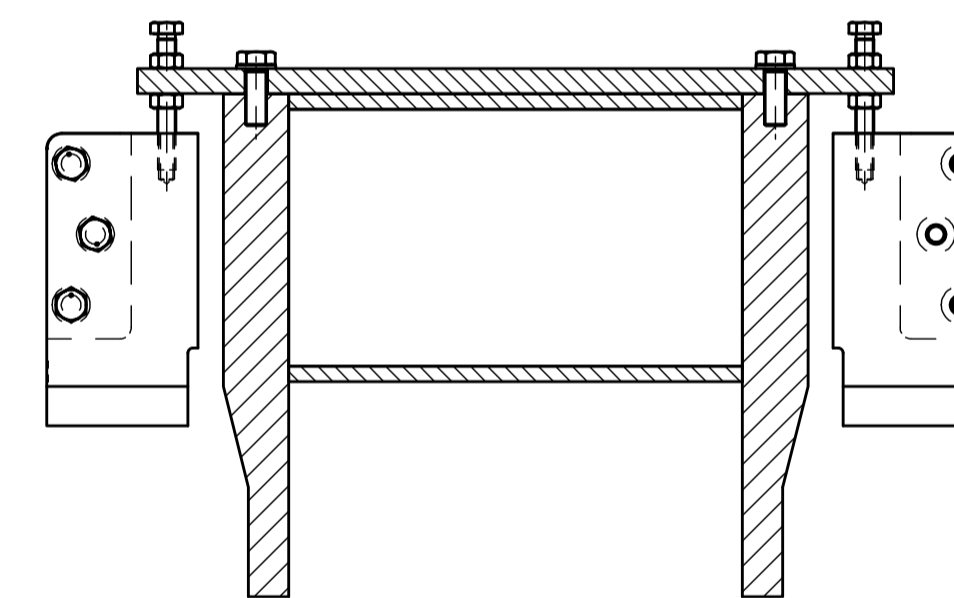
zie section A-A schotten dik 120/50 mm met afdrukdraadeinden (7x)
zie section A-A
voorstel Hollandia



SECTION H-H
scale (1 : 15)



SECTION J-J
scale (1 : 15)



FOR GENERAL NOTES SEE 2200-00-Document

Rev.	Date	Drawn	Checked	Description
D	17-10-2022	HP&J	NDI	section A-A aangepast
C	13-10-2022	HP&J	NDI	Sleek stelbout section H-H gewijzigd & plaat section A-A ingekort
B	10-10-2022	HP&J	NDI	Stelmogelijkheid tandsegmenten aangebracht
A	30-8-2022	RvZ	AvL	First issue

HOLLANDIA INFRA		Hollandia Infra b.v. P.O. Box 12 2920AA Krimpen a/d IJssel Phone: +31 (0) 180-540 540 Fax: +31 (0) 180-519 956	
Client :	Rijkswaterstaat	No part of this drawing may be reproduced in any form by print, photocopy or used in any other way without written permission from Hollandia Infra b.v.	
Project :	Haringvlietbrug	Projection	
Title :	Overzicht - Tandbaan Aanpassingen / Toevoegingen Hollandia	Units: mm	Geometric tolerances acc. to: 2200-00-Document
Status:	For Information Only	Scale:	File name
Date:	21-10-22	1 : 50	34454-00-S002
Checked by:	Nico Dijk	Format:	A1
			REV. D