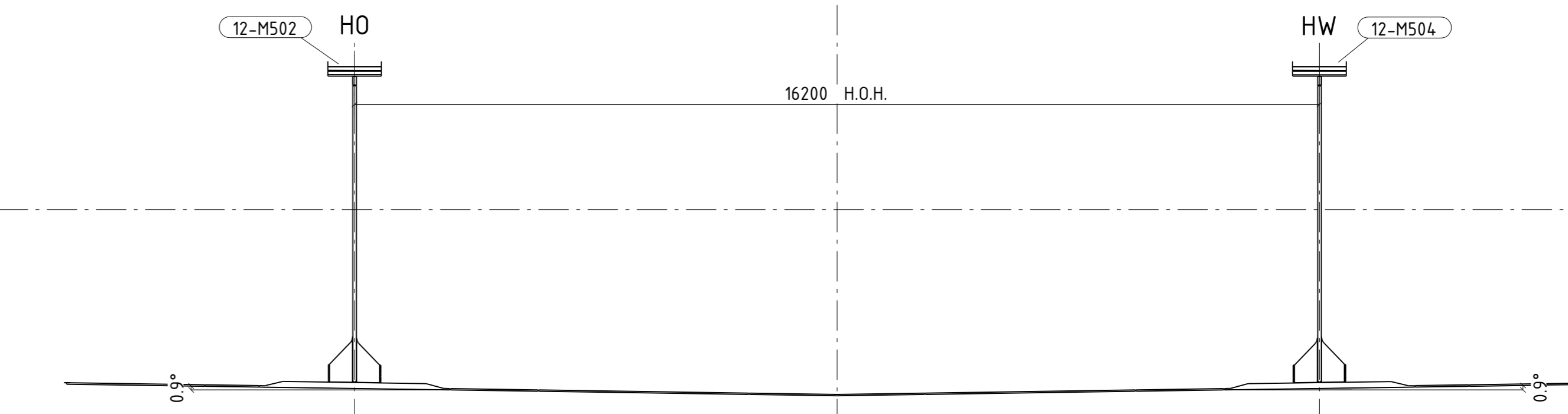


DOORSNEDE: C - C  
1:75



DOORSNEDE: D - D  
1:75

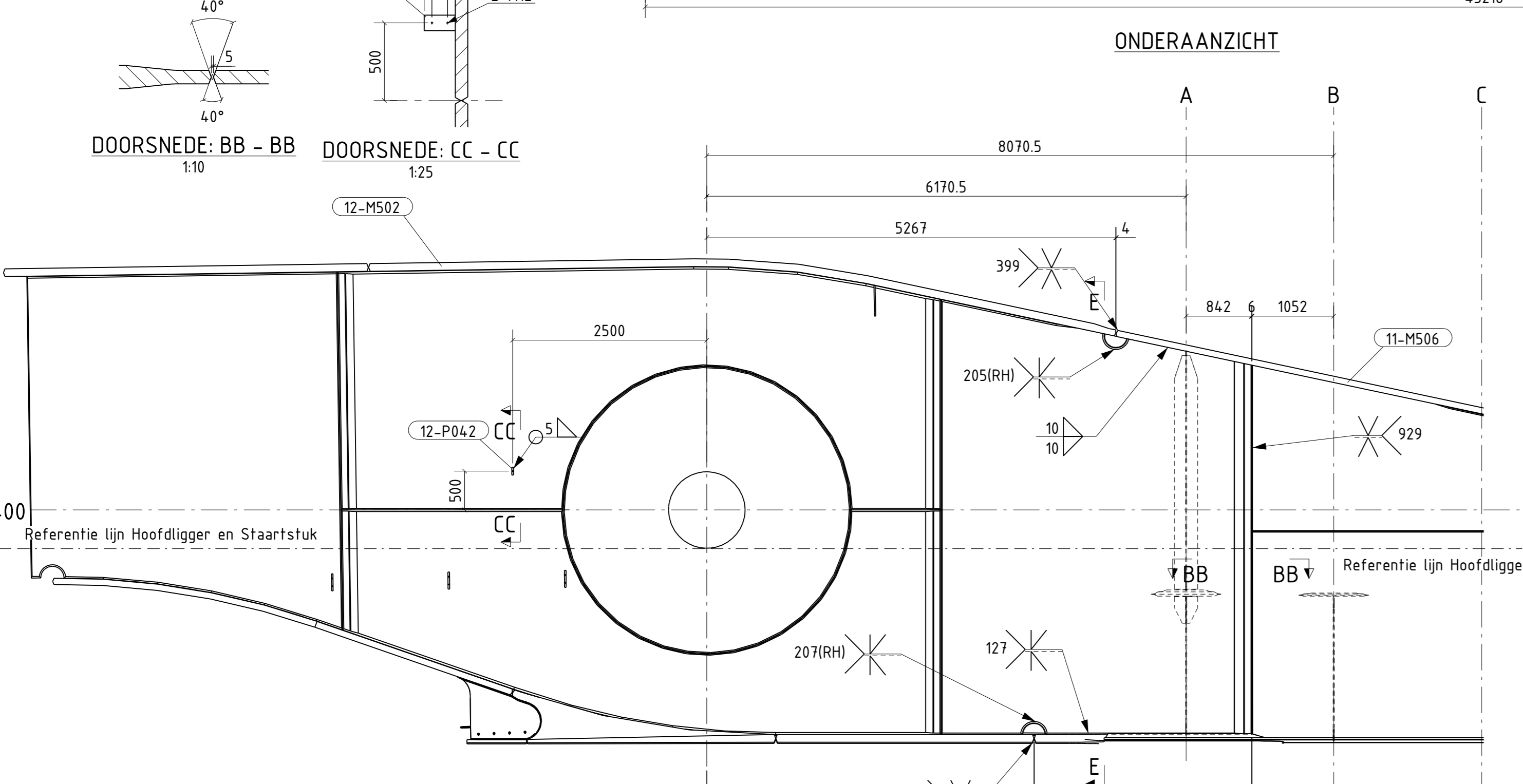
PARTS LIST [1x EXECUTED]						
Part	NOS	Profile	Length	Description	Material	HO Galv Weight (kg)
12-P021	2	PL 15x206	8771		S355ML T35 3,2	553
12-P022	2	PL 15x206	8787		S355ML T35 3,2	558
12-P033	2	15x735	735		S355ML T35 3,2	4,4
12-P035	2	15x735	735		S355ML T35 3,2	4,4
12-P036	4	15x713	713		S355ML T35 3,2	8,7
12-P037	2	15x702	702		S355ML T35 3,2	4,3
12-P038	2	15x711	711		S355ML T35 3,2	4,3
12-P039	2	15x729	729		S355ML T35 3,2	4,4
12-P040	2	15x711	711		S355ML T35 3,2	4,3
12-P041	2	15x720	720		S355ML T35 3,2	4,4
12-P042	2	PL 20x100	200		S355ML T35 3,2	4
12-P043	4	15x702	702		S355ML T35 3,2	8,6
12-P044	2	PL 60x144	288		S355ML T35 3,2	30
12-P045	2	15x721	721		S355ML T35 3,2	4,4
12-P046	4	15x763	763		S355ML T35 3,2	9,1
12-P047	4	15x750	750		S355ML T35 3,2	8,9
12-P048	2	PL 60x147	288		S355ML T35 3,2	28
12-P053	3	PL 20x200	220		S355ML T35 3,2	21
14-P018	2	PL 15x138	138		S355ML T35 3,2	3
14-P048	2	PL 15x140	140		S355ML T35 3,2	3
12-M507	1	Assembly		Lijfplaat: Boven en onder Flens Staartpost		79560
12-M504	1	Assembly		Lijfplaat: Boven en onder Flens Staart west		79541
14-M579	1	Assembly		Aanvoerschal as A - h=3086, oost		270
14-M522	1	Assembly		Aanvoerschal as A - h=3086, west		270
						Weight: 16769 kg

Building Part Reference:  
1x in 10-W01

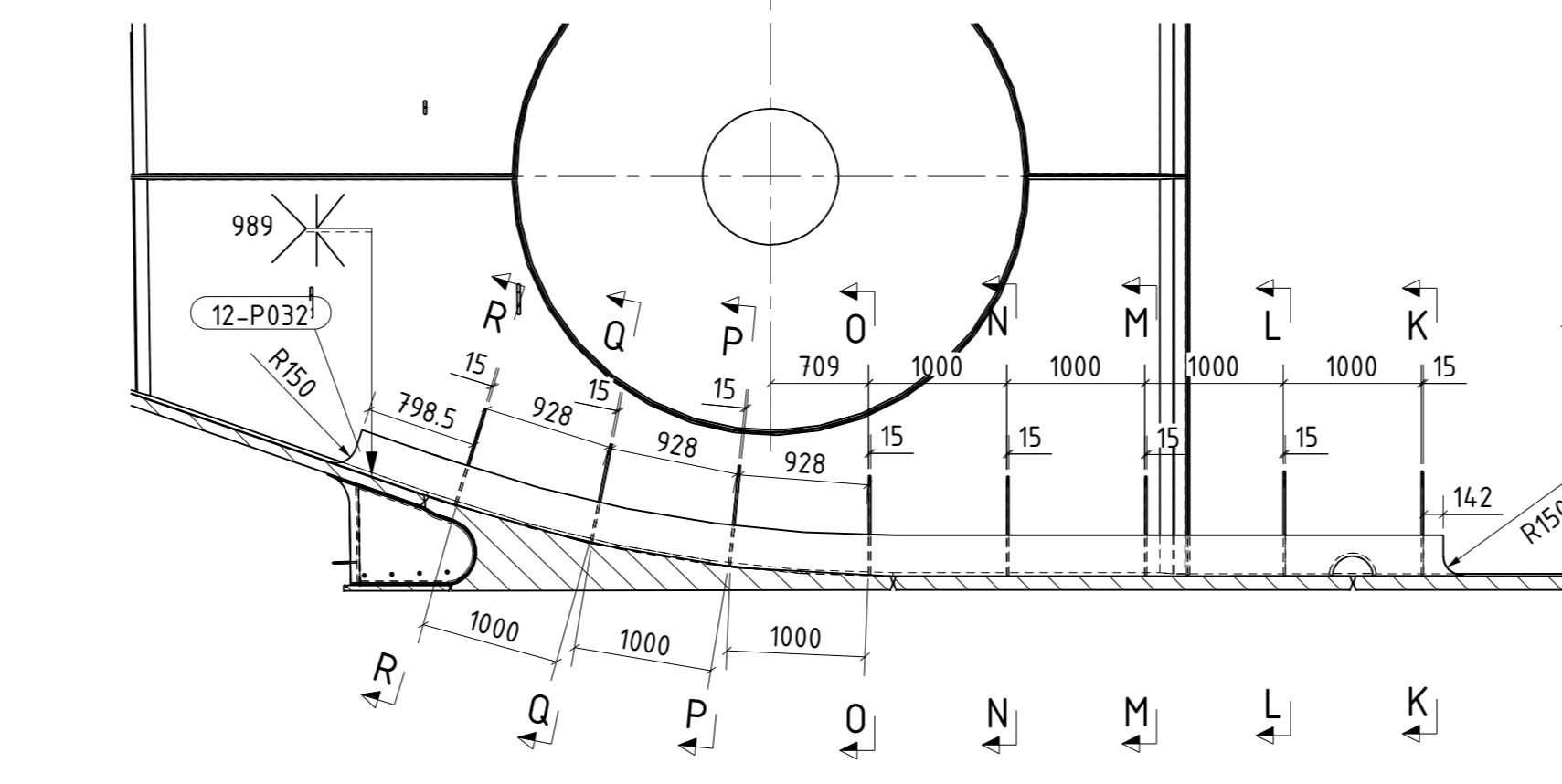
**Weld specification:**  
- ALL WELDS DOUBLE FILLET as S, UNLESS OTHERWISE SPECIFIED.  
- ALL FILLET WELD VALUES REPRESENT THE THROAT THICKNESS: a

**Additional text to weld numbers:**  
TFS = TOP FLANGE    NS3 = NEAR SIDE  
W = WEB    PS3 = FAR SIDE  
BFI = BOTTOM FLANGE    RH = RAT HOLE

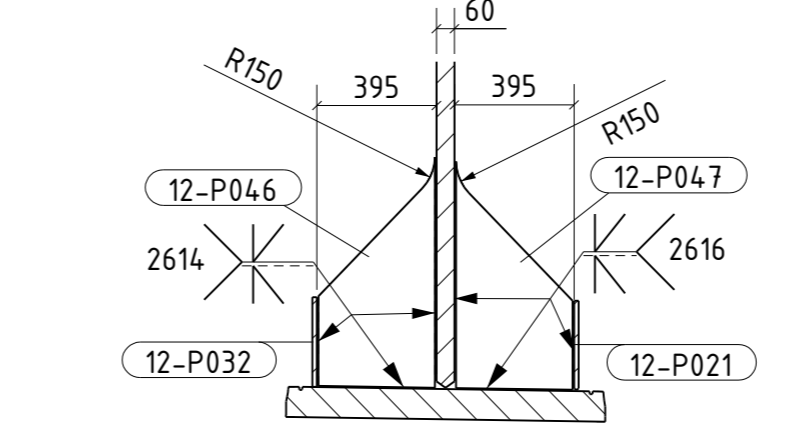
**Weldnumbers: (Full Penetration Welds)**  
80, 84, 72, 36, 20, 206, 207, 209, 397, 399, 426, 427, 707, 800, 855, 329, 931, 932, 933, 934, 935, 936, 937, 938, 939, 980, 981, 982, 983, 986, 987, 988, 989, 990, 991, 992, 998, 1093, 1094, 1095, 1151, 1152, 1153, 1154, 1155, 1156, 1157, 1160, 1249, 2630, 2611, 2612, 2613, 2614, 2615, 2616, 2617, 2631



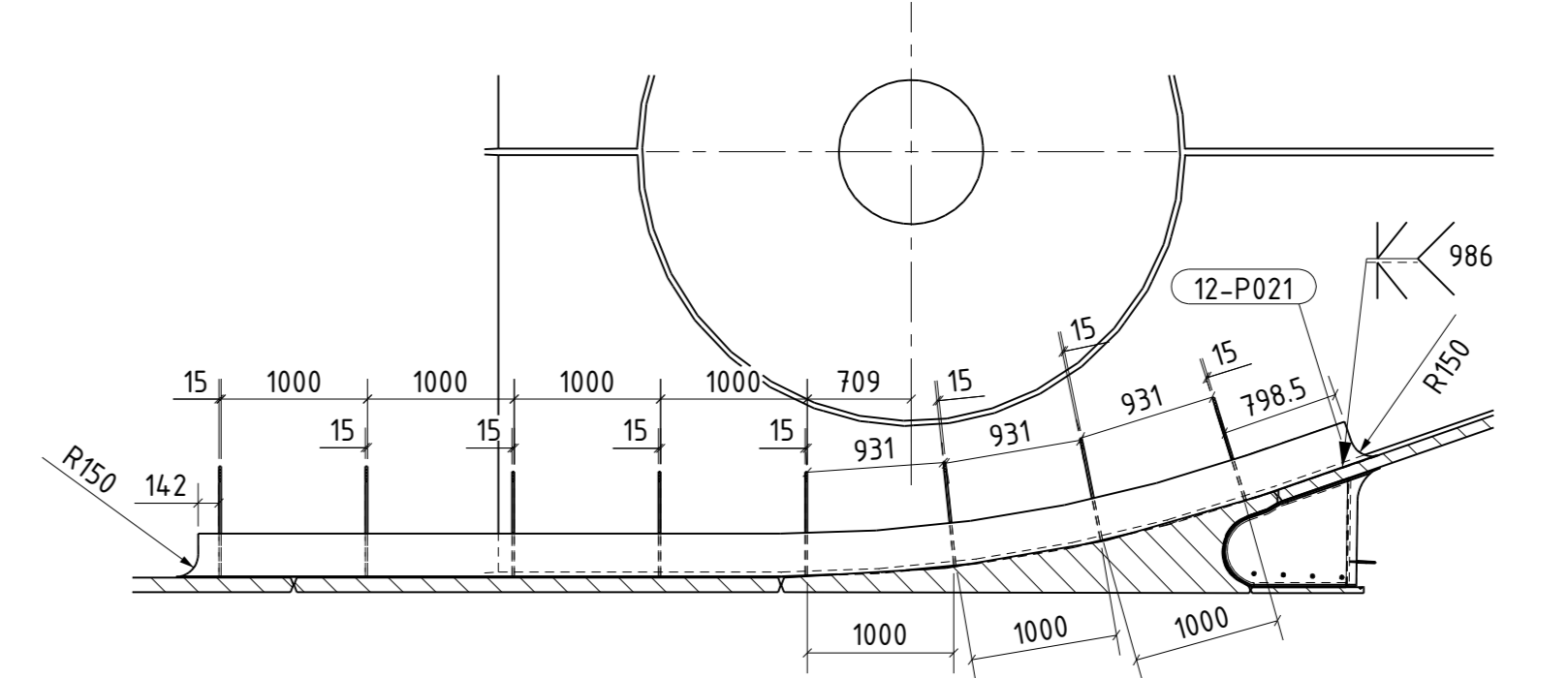
ONDERAANZICHT



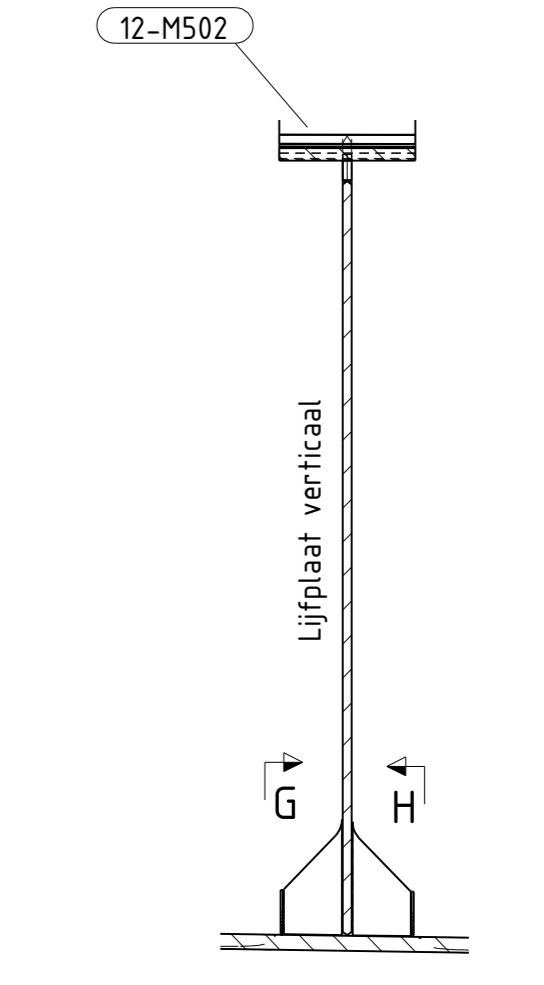
DOORSNEDE: G - G  
1:50



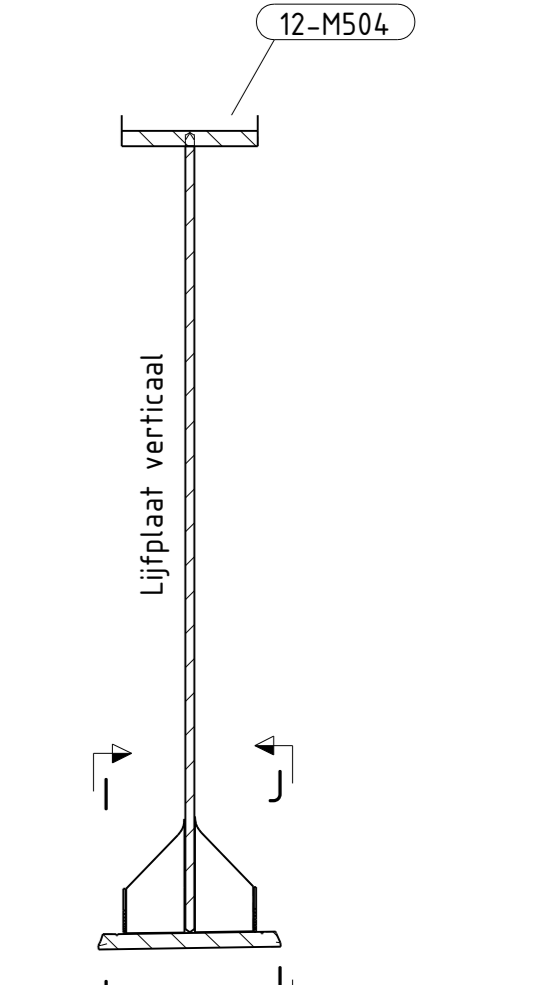
DOORSNEDE: K - K  
1:25



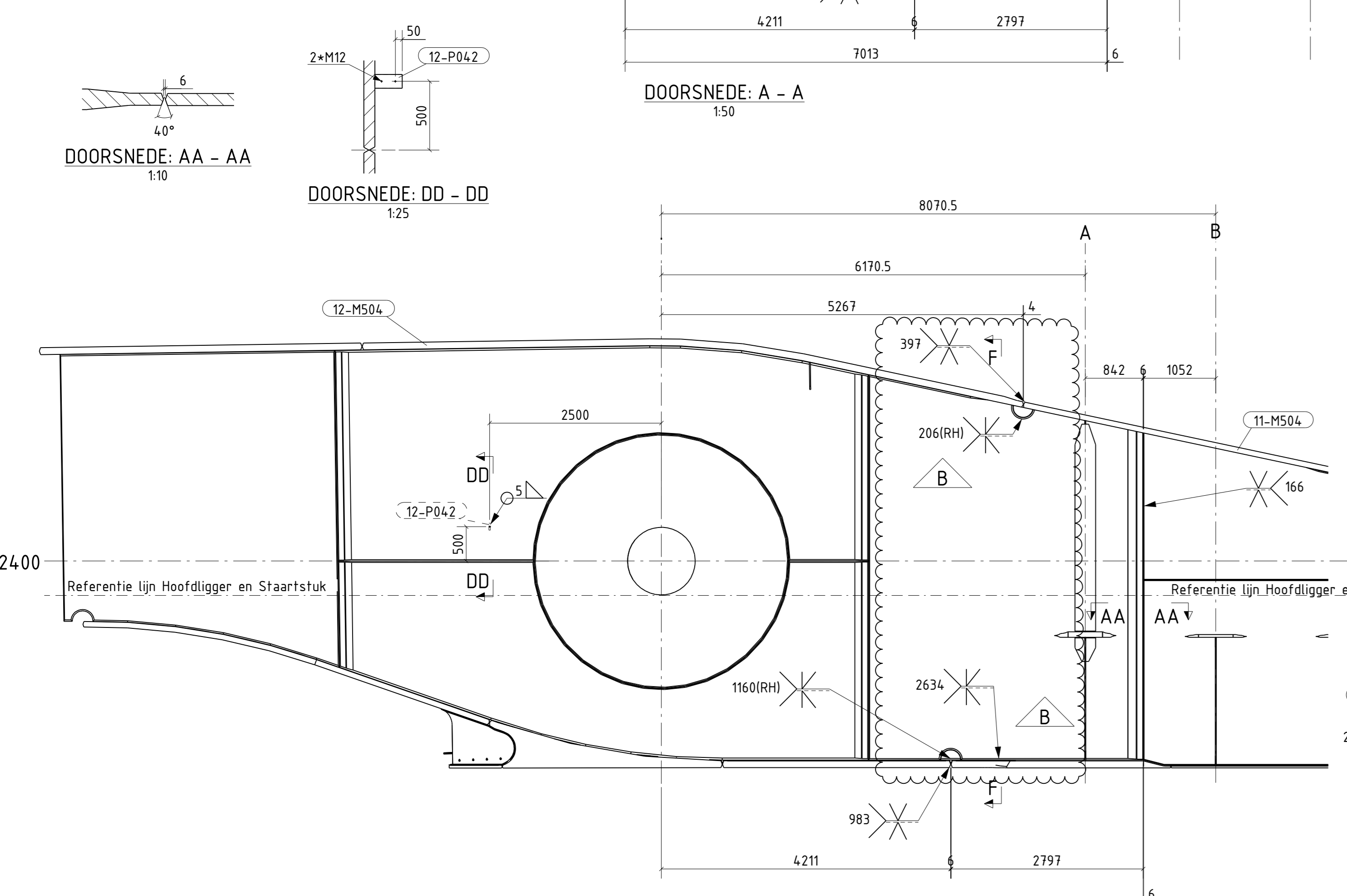
DOORSNEDE: H - H  
1:50



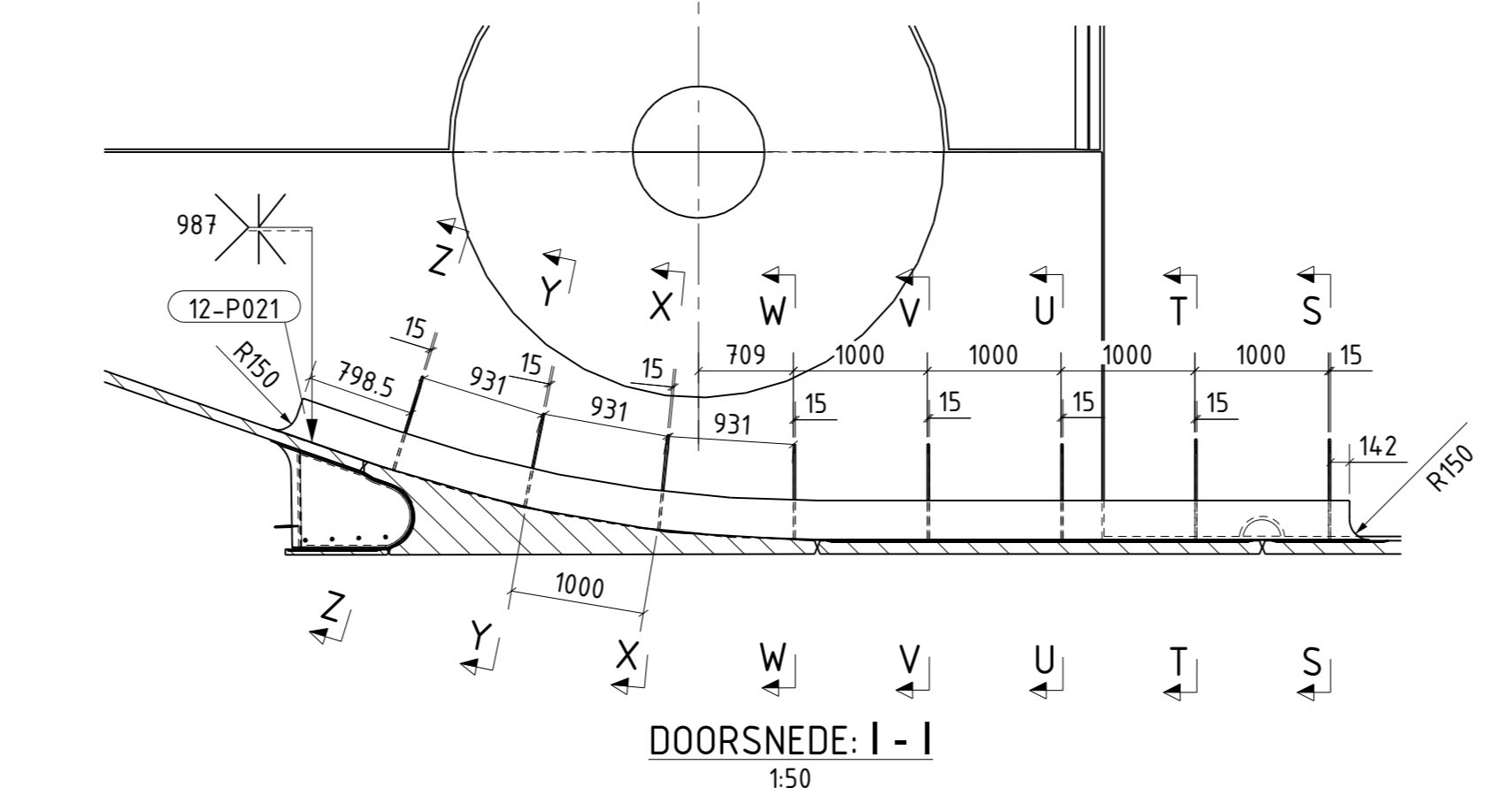
DOORSNEDE: E - E  
1:50



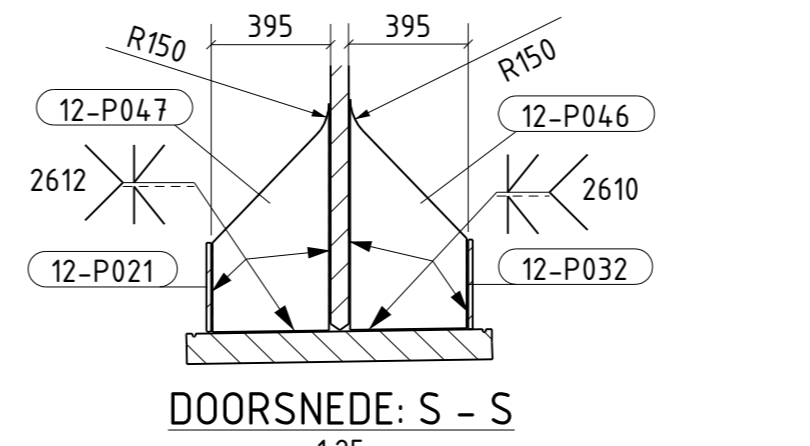
DOORSNEDE: F - F  
1:50



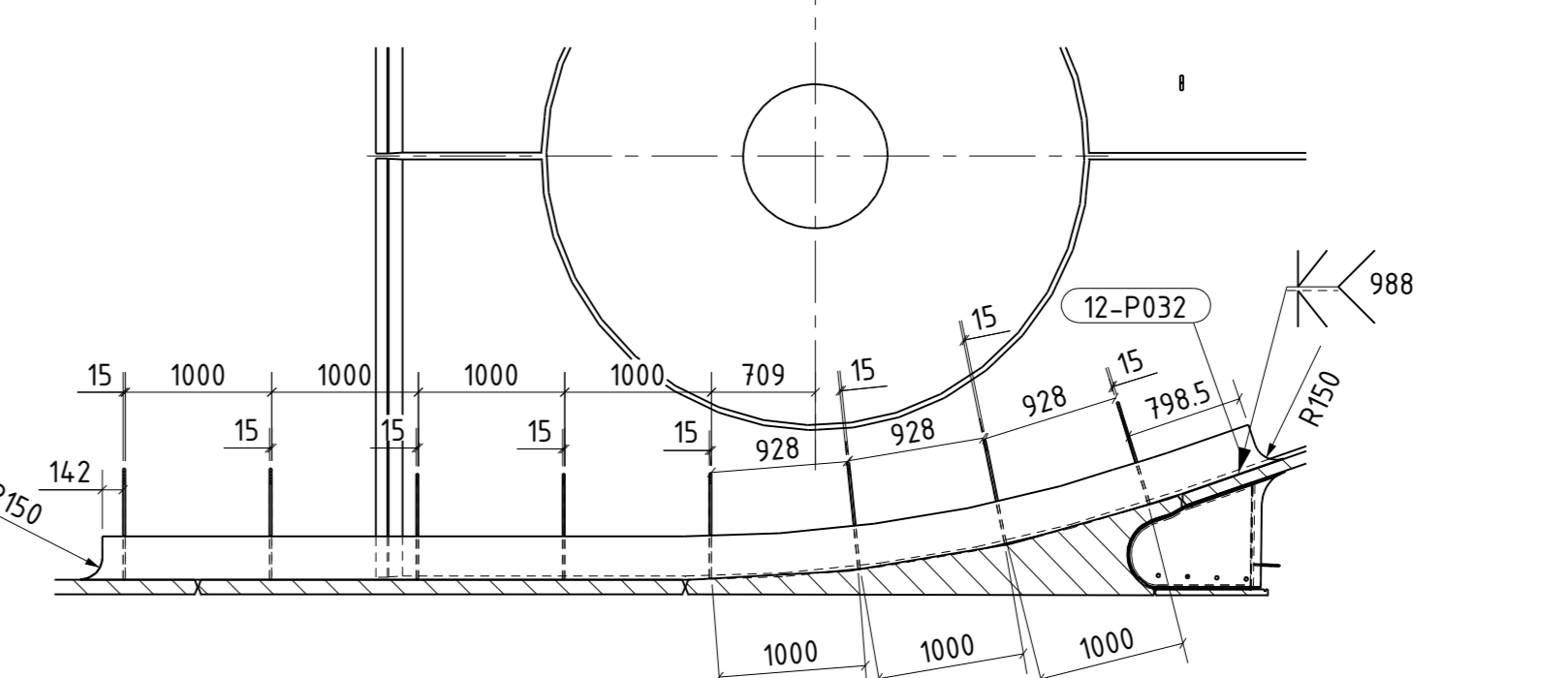
ONDERAANZICHT



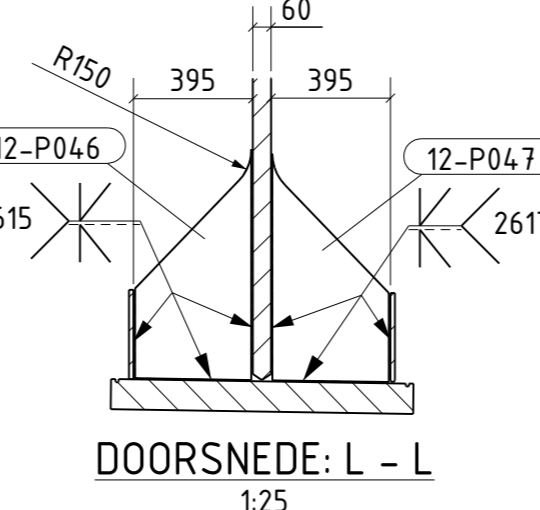
DOORSNEDE: I - I  
1:50



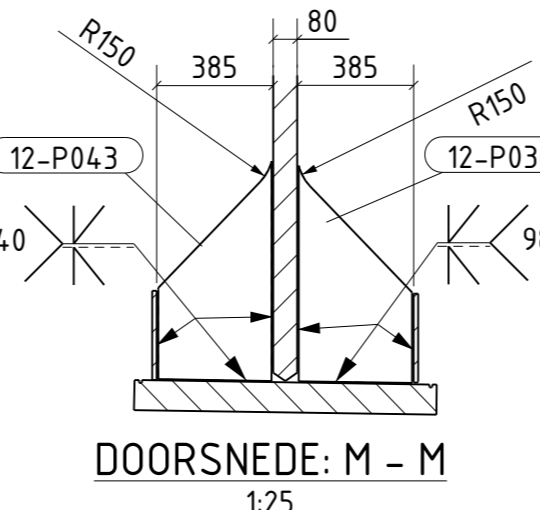
DOORSNEDE: S - S  
1:25



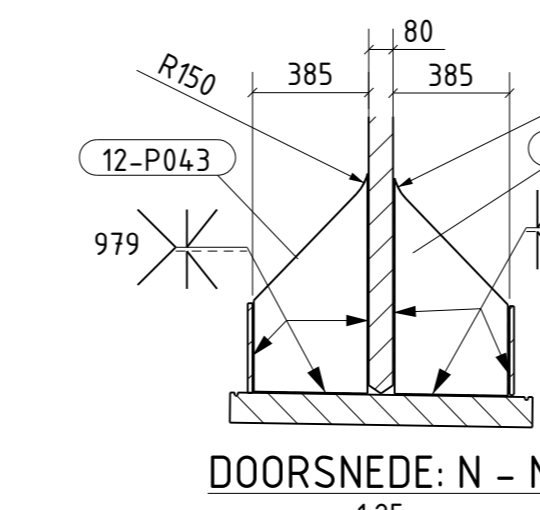
DOORSNEDE: J - J  
1:50



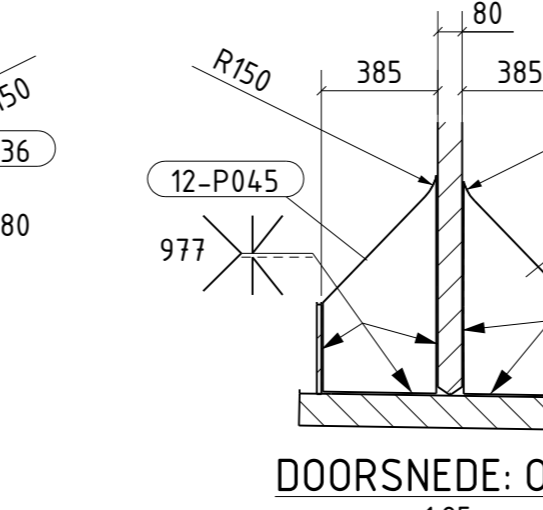
DOORSNEDE: L - L  
1:25



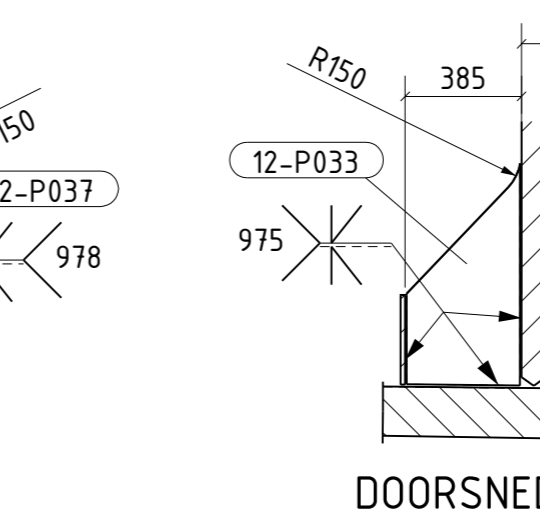
DOORSNEDE: M - M  
1:25



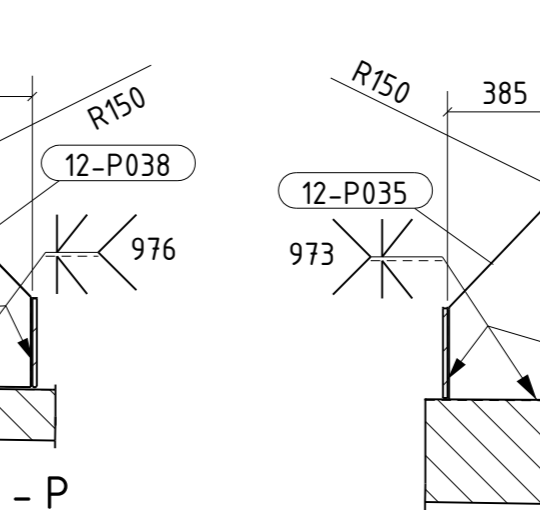
DOORSNEDE: N - N  
1:25



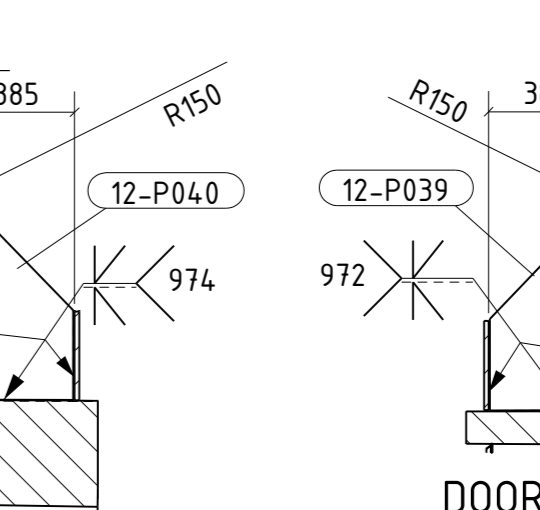
DOORSNEDE: O - O  
1:25



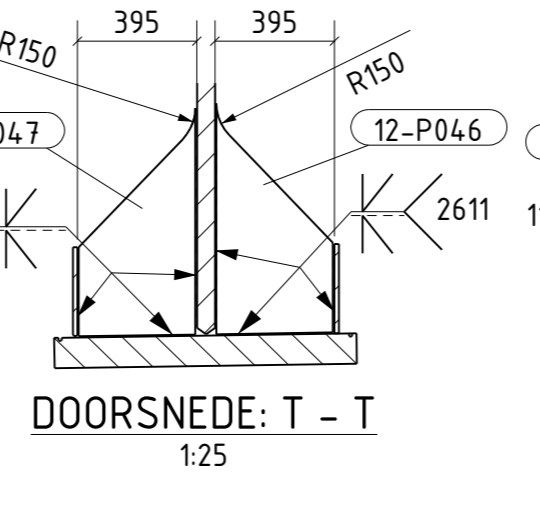
DOORSNEDE: P - P  
1:25



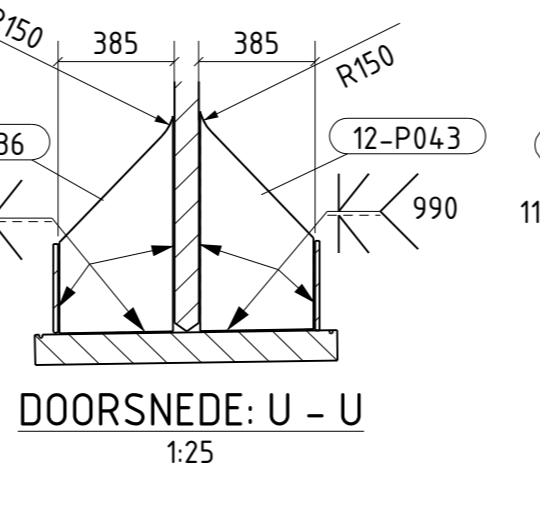
DOORSNEDE: Q - Q  
1:25



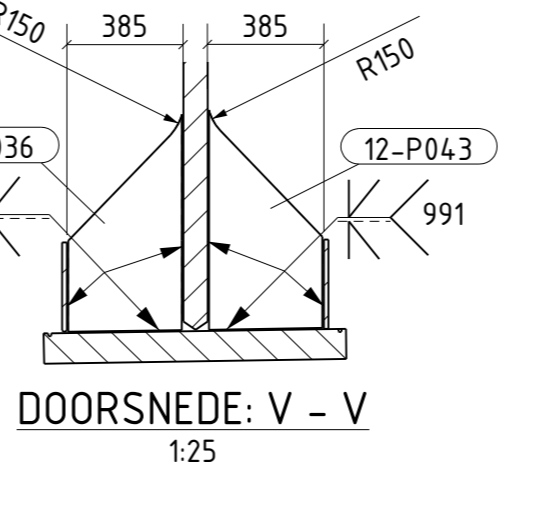
DOORSNEDE: R - R  
1:25



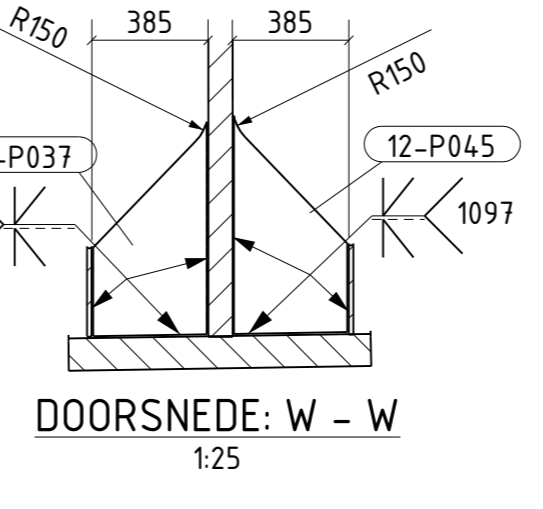
DOORSNEDE: T - T  
1:25



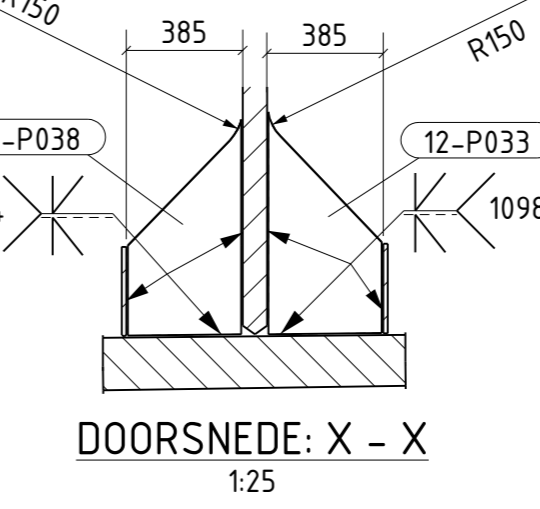
DOORSNEDE: U - U  
1:25



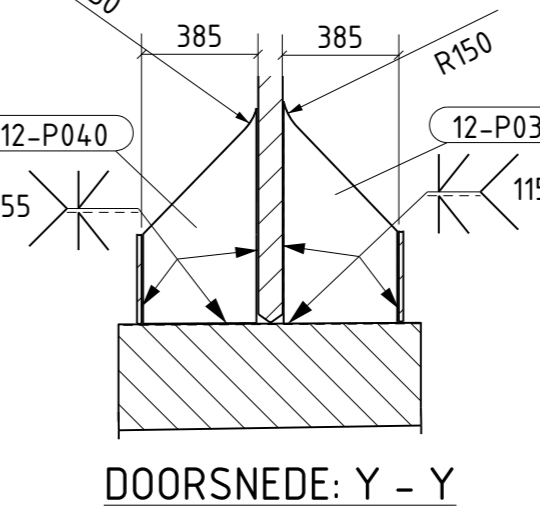
DOORSNEDE: V - V  
1:25



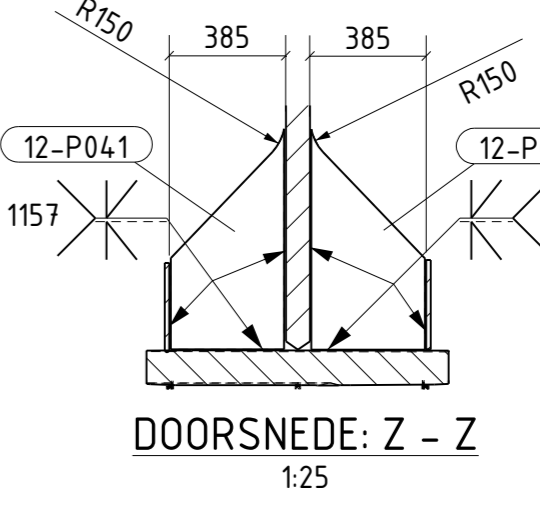
DOORSNEDE: W - W  
1:25



DOORSNEDE: X - X  
1:25



DOORSNEDE: Y - Y  
1:25



DOORSNEDE: Z - Z  
1:25

FOR GENERAL NOTES SEE 2200-00

Rev	Date	Drawn	Checked	Description
A	12-08-22	ALB	ALB	Start uitgaaf

**HOLLANDIA INFRA**

Hollandia Infra b.v.  
P.O. Box 12  
2600 AA Krimpen aan IJssel  
Phone: +31 (0) 180-540540  
Fax: +31 (0) 180-519956

Client: Rijkswaterstaat  
Project: Haringvlietbrug  
Title: Lassamenstelling-Val Dek Staartstuk en Hoofdligger  
Scale: 1:15  
File name: 34454-10-004  
REV: B

Status: As built  
Date: 17-07-23  
Checked by: Nico Dijk

UNB: mm  
Geometric tolerances acc. to 2200-00-Document  
Working symbols acc. to EN 22568